

YG-DCO-012-E(B)

Yorkshire Green Energy Enablement (GREEN) Project

Volume 2

Document 2.5.5(B) Land Plan Section E

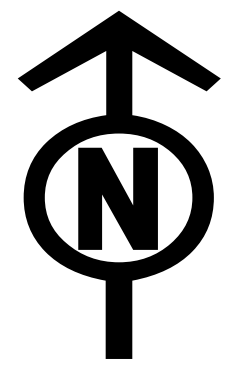
Final Issue B

February 2023

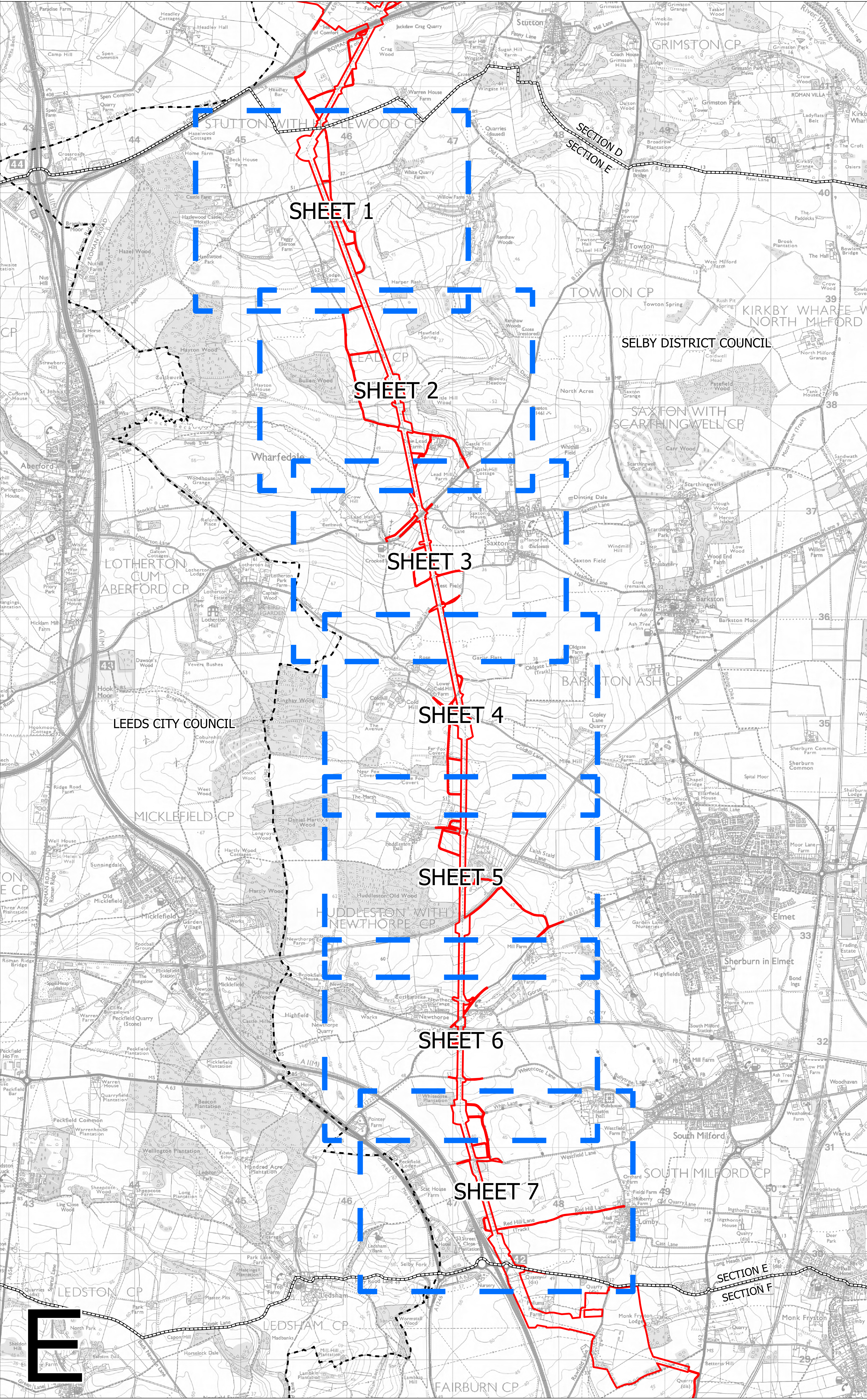
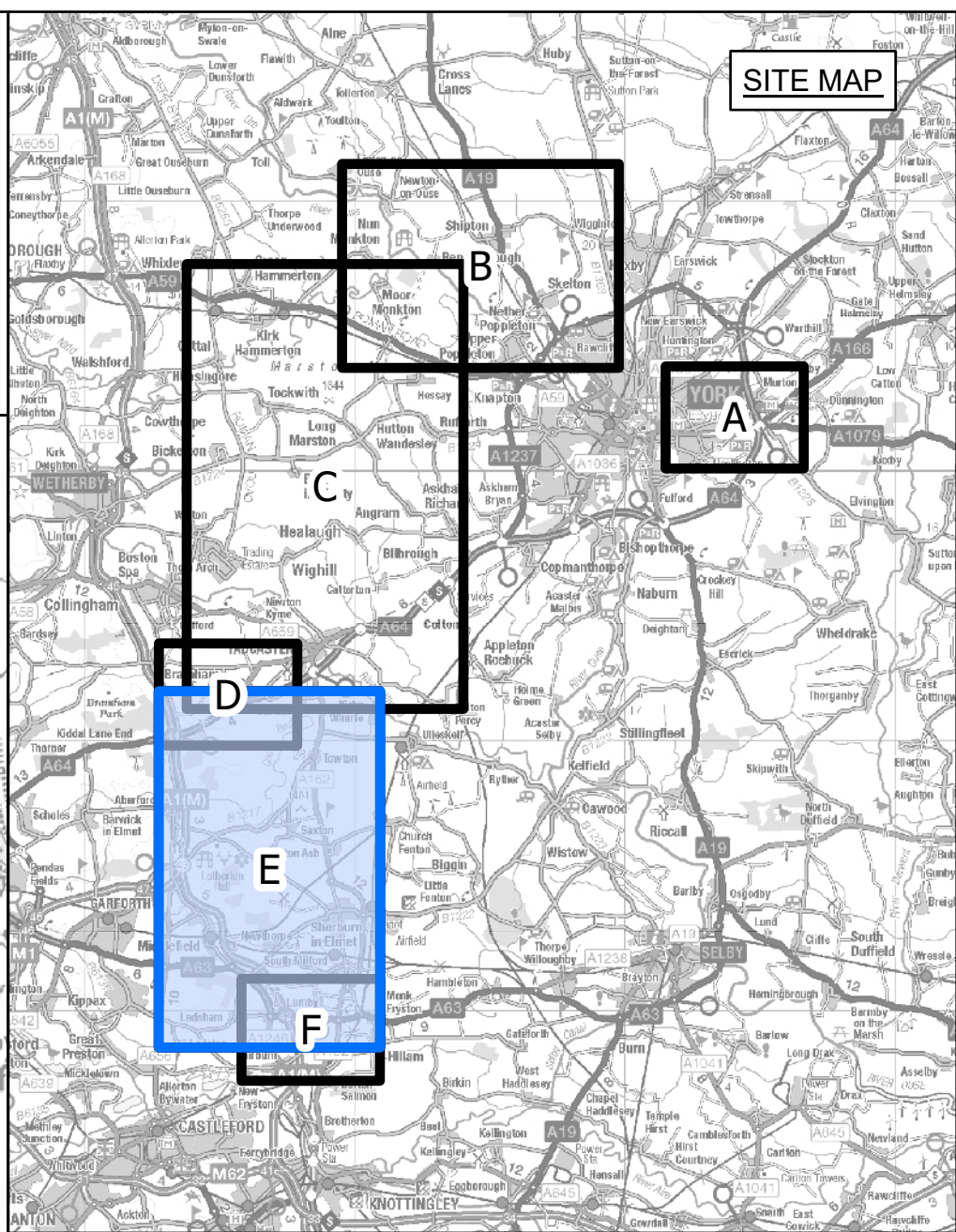
Planning Inspectorate Reference: EN020024

Infrastructure Planning (Applications: Prescribed Forms and
Procedure) Regulations 2009 Regulation 5(2)(i) - (ii)(iii)

nationalgrid



NATIONAL GRID (YORKSHIRE GREEN ENERGY ENABLEMENT PROJECT) ORDER
 LAND KEY PLAN
 REGULATION 5(2)(i) - (ii)(iii)
 SECTION E, SHEET 1 OF 1



- LEGEND**
- LOCAL AUTHORITY BOUNDARY
 - SECTION BOUNDARY
 - ORDER LIMITS
 - SHEET INDEX

Notes

This drawing is scaled at paper size A0, therefore any prints taken at smaller sizes will affect accuracy of the measurement units and should not be scaled against.

For additional detail on the plan suites, please refer to Document 2.3 Plan Guidance Document, located in Volume 2 of the DCO Application.

The local authorities' boundaries and titles are correct at the time of submission. North Yorkshire County Council and its 7 districts are expected to form a new single council (North Yorkshire Council) on 1 April 2023.

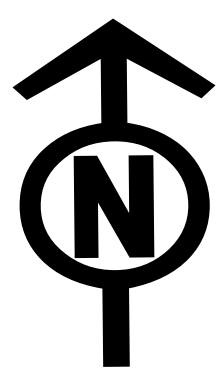
Coordinate System: British National Grid
 Sheet X Centroid Coordinate: 446823 Sheet Y Centroid Coordinate: 435221

0 150 300 600 900 1200 Meters

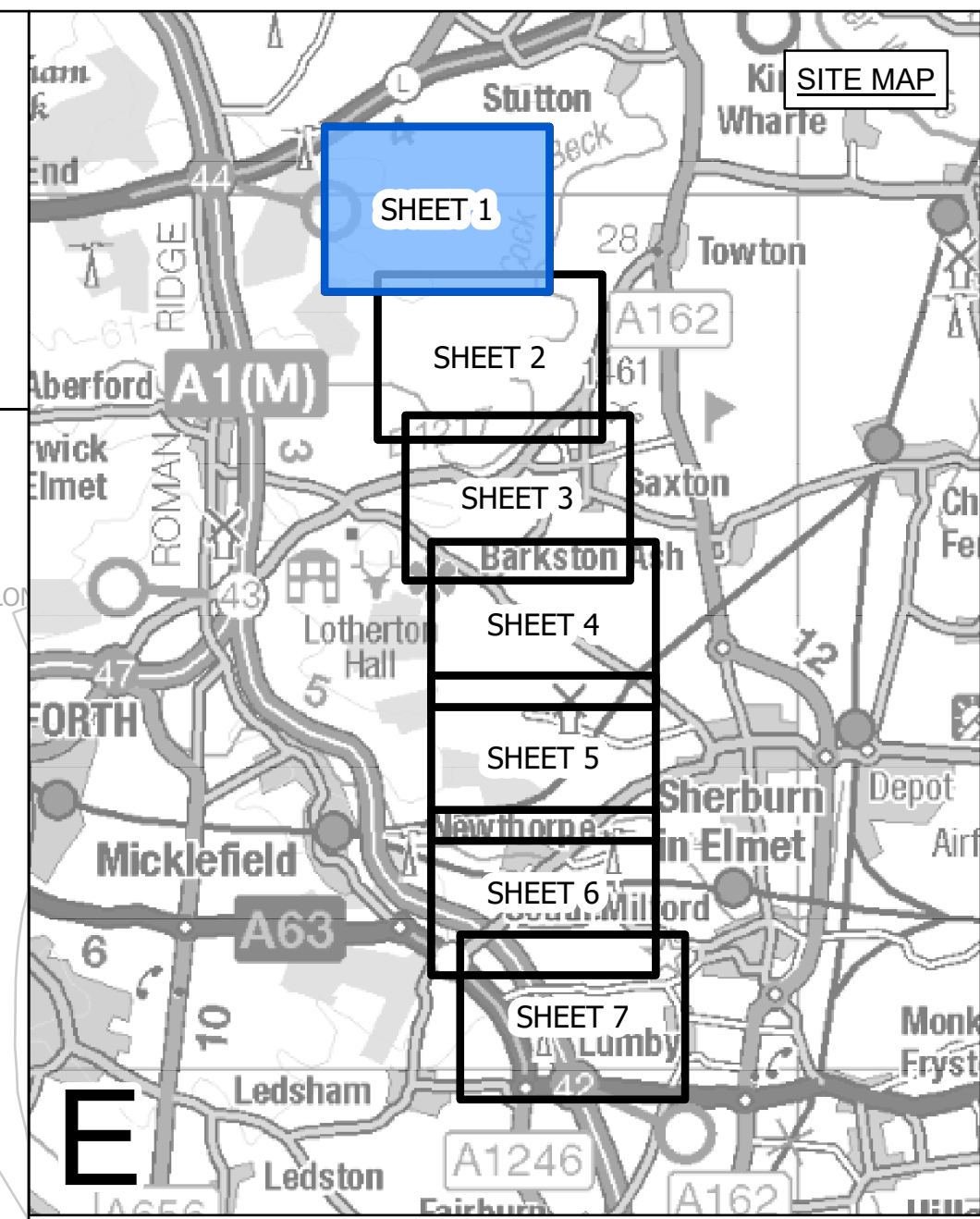
BACKGROUND MAPPING INFORMATION HAS BEEN REPRODUCED FROM THE ORDNANCE SURVEY BY PERMISSION OF ORDNANCE SURVEY OF THE CONTROLLER OF HER MAJESTY'S STATIONERY OFFICE. CROWN COPYRIGHT ORDNANCE SURVEY © BLUESKY INTERNATIONAL LTD © NATIONAL GRID ELECTRICITY - 100024241.

Issue	Date	Remarks	Drawn	Checked	Approved
A	01/11/2022	FOR DCO SUBMISSION	MG	SF	EMD

Title			
NATIONAL GRID (YORKSHIRE GREEN ENERGY ENABLEMENT PROJECT) ORDER LAND KEY PLAN REGULATION 5(2)(i) - (ii)(iii) SECTION E, SHEET 1 OF 1			
nationalgrid			
Application Number		EN020024	
National Grid Drawing Reference			
DCO_E/LP/KP/01			
Scale	Sheet Size	Sheet	Issue
1:12,000	A0	SHEET 1 OF 1	A



NATIONAL GRID (YORKSHIRE GREEN ENERGY ENABLEMENT PROJECT) ORDER
 LAND PLAN
 REGULATION 5(2)(i) - (ii)(iii)
 SECTION E, SHEET 1 OF 7



- LEGEND**
- LOCAL AUTHORITY BOUNDARY
 - SECTION BOUNDARY
 - ORDER LIMITS
- PLOTS**
- CLASS 2 - COMPULSORY ACQUISITION OF RIGHTS FOR THE AUTHORISED DEVELOPMENT
 - CLASS 3 - COMPULSORY ACQUISITION OF RIGHTS OF ACCESS
 - CLASS 4 - TEMPORARY USE FOR CONSTRUCTION AND MITIGATION

Notes

This drawing is scaled at paper size A0, therefore any prints taken at smaller sizes will affect accuracy of the measurement units and should not be scaled against.

All easements, servitudes and private rights are proposed to be extinguished on land that is to be acquired unless stated otherwise in the Book of Reference (Volume 4, Document 4.3).

For additional detail on the plan suites, please refer to Document 2.3 Plan Guidance Document, located in Volume 2 of the DCO Application.

The local authorities' boundaries and titles are correct at the time of submission. North Yorkshire County Council and its 7 districts are expected to form a new single council (North Yorkshire Council) on 1 April 2023.

Coordinate System: British National Grid
 Sheet X Centroid Coordinate: 439830 Sheet Y Centroid Coordinate: 445860



BACKGROUND MAPPING INFORMATION HAS BEEN REPRODUCED FROM THE ORDNANCE SURVEY BY PERMISSION OF ORDNANCE SURVEY OF THE CONTROLLER OF HER MAJESTY'S STATIONERY OFFICE. CROWN COPYRIGHT ORDNANCE SURVEY ©. BLUESKY INTERNATIONAL LTD ©. NATIONAL GRID ELECTRICITY - 100024241.

Issue	Date	Remarks	Drawn	Checked	Approved
B	14/02/2023	SS1 ADVICE UPDATE	MG	SF	EMD
A	01/11/2022	FOR DCO SUBMISSION	MG	SF	EMD

Title

NATIONAL GRID
 (YORKSHIRE GREEN ENERGY ENABLEMENT PROJECT) ORDER
 LAND PLAN
 REGULATION 5(2)(i) - (ii)(iii)
 SECTION E, SHEET 1 OF 7

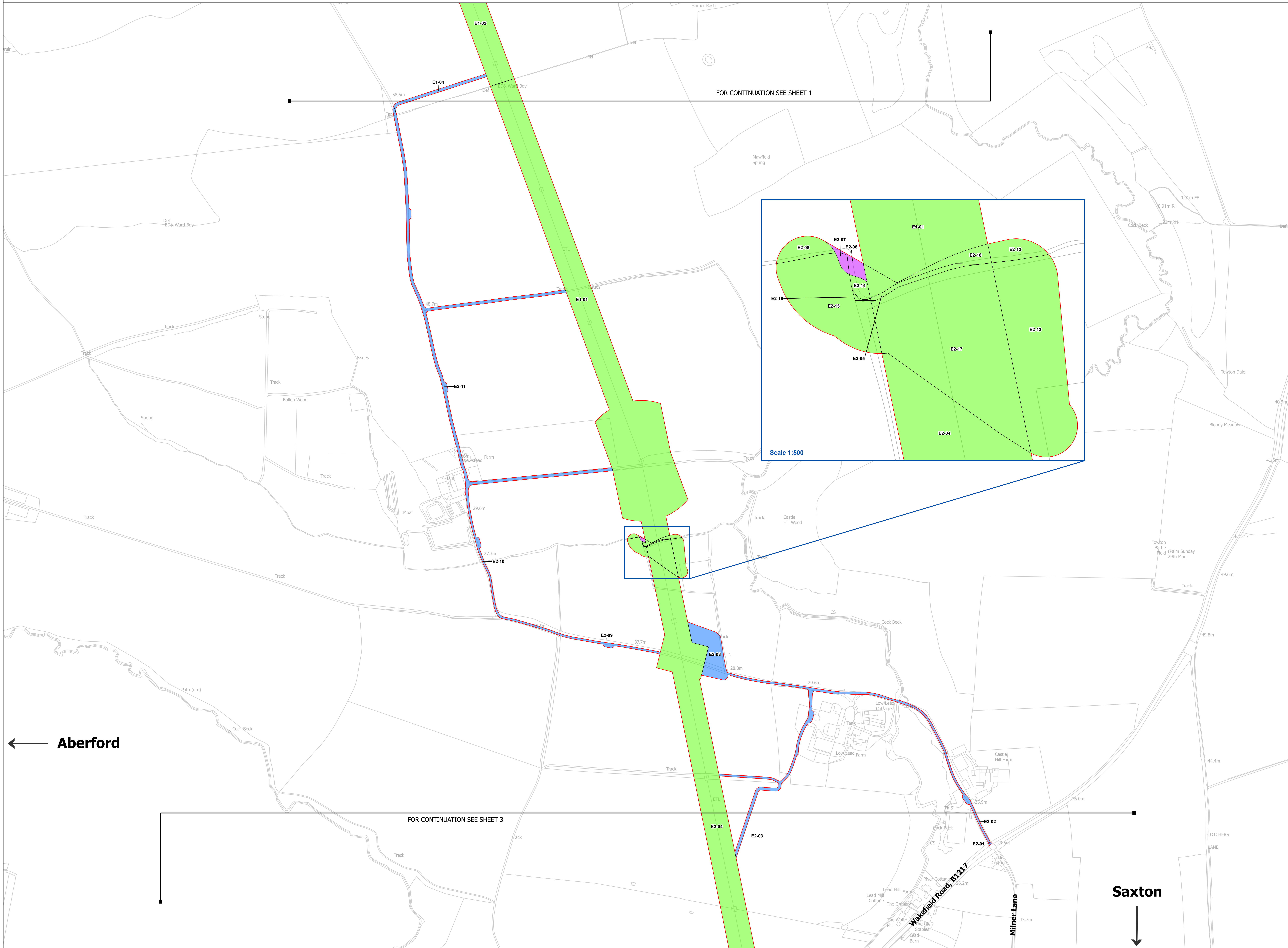
nationalgrid			
Application Number		EN020024	
National Grid Drawing Reference			
DCO_E/LP/PS/01			
Scale	Sheet Size	Sheet	Issue
1:2,500	A0	SHEET 1 OF 7	B

FOR CONTINUATION SEE SHEET 2

Towton →

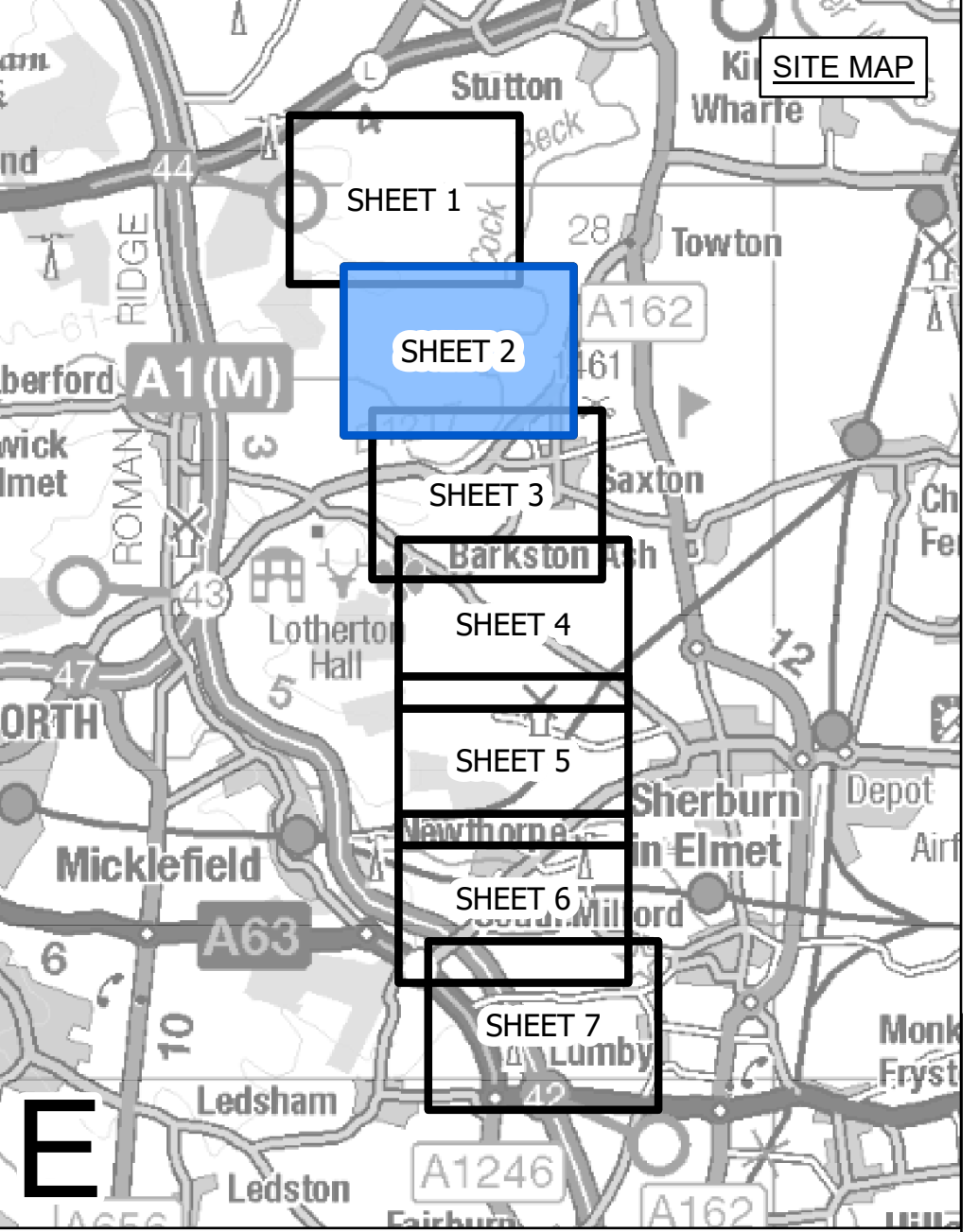
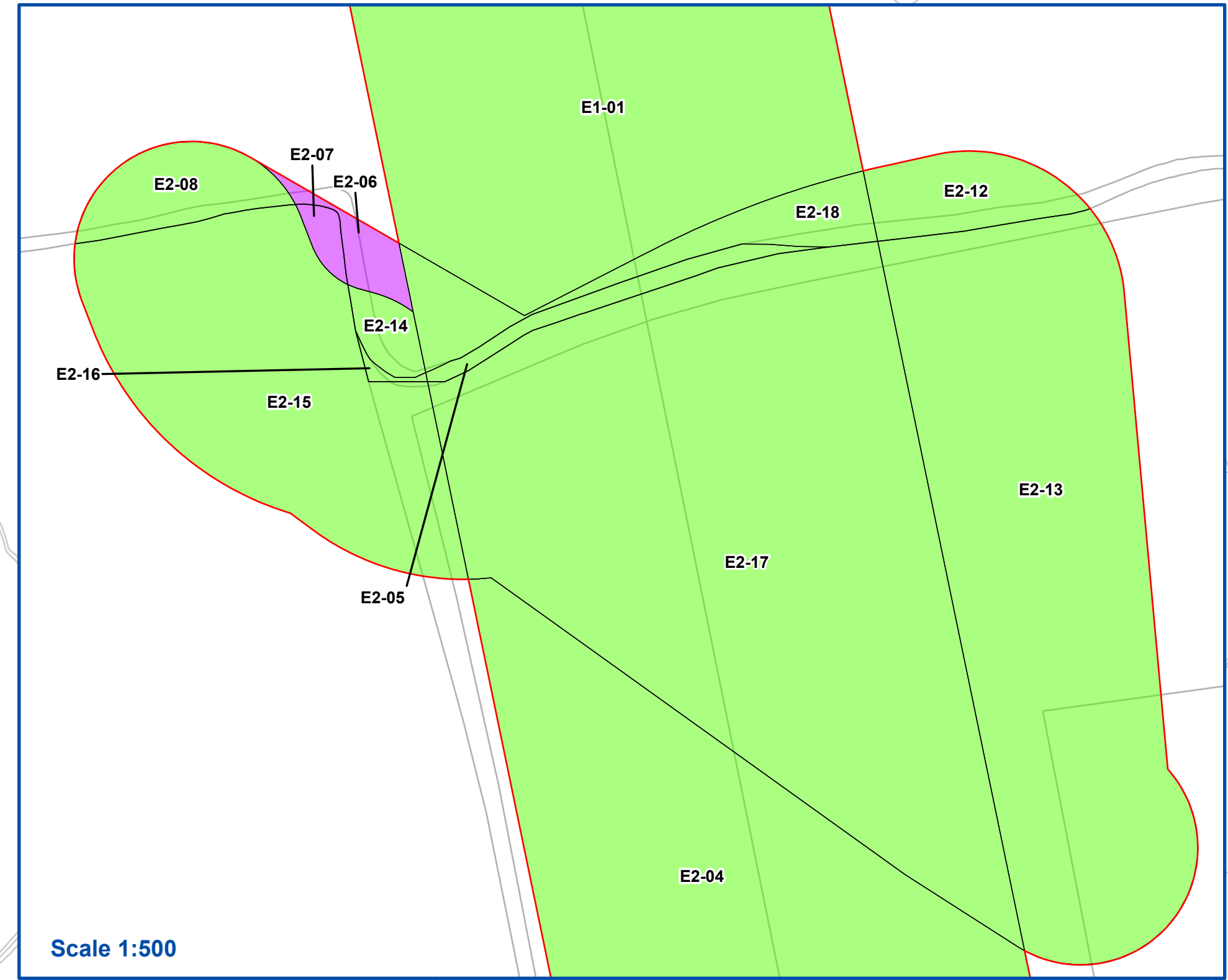


NATIONAL GRID (YORKSHIRE GREEN ENERGY ENABLEMENT PROJECT) ORDER
 LAND PLAN
 REGULATION 5(2)(i) - (ii)(iii)
 SECTION E, SHEET 2 OF 7



FOR CONTINUATION SEE SHEET 1

FOR CONTINUATION SEE SHEET 3



- LEGEND**
- LOCAL AUTHORITY BOUNDARY
 - SECTION BOUNDARY
 - ORDER LIMITS
- PLOTS**
- CLASS 2 - COMPULSORY ACQUISITION OF RIGHTS FOR THE AUTHORISED DEVELOPMENT
 - CLASS 3 - COMPULSORY ACQUISITION OF RIGHTS OF ACCESS
 - CLASS 4 - TEMPORARY USE FOR CONSTRUCTION AND MITIGATION

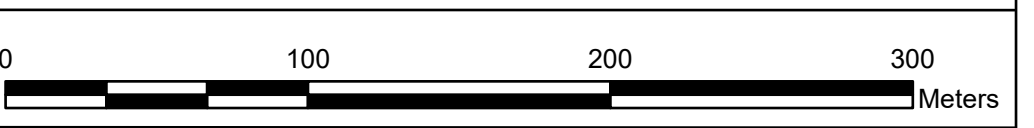
Notes
 This drawing is scaled at paper size A0, therefore any prints taken at smaller sizes will affect accuracy of the measurement units and should not be scaled against.

All easements, servitudes and private rights are proposed to be extinguished on land that is to be acquired unless stated otherwise in the Book of Reference (Volume 4, Document 4.3).

For additional detail on the plan suites, please refer to Document 2.3 Plan Guidance Document, located in Volume 2 of the DCO Application.

The local authorities' boundaries and titles are correct at the time of submission. North Yorkshire County Council and its 7 districts are expected to form a new single council (North Yorkshire Council) on 1 April 2023.

Coordinate System: British National Grid
 Sheet X Centroid Coordinate: 438139 Sheet Y Centroid Coordinate: 446468



BACKGROUND MAPPING INFORMATION HAS BEEN REPRODUCED FROM THE ORDNANCE SURVEY BY PERMISSION OF ORDNANCE SURVEY OF THE CONTROLLER OF HER MAJESTY'S STATIONERY OFFICE. CROWN COPYRIGHT ORDNANCE SURVEY ©. BLUESKY INTERNATIONAL LTD ©. NATIONAL GRID ELECTRICITY - 100024241.

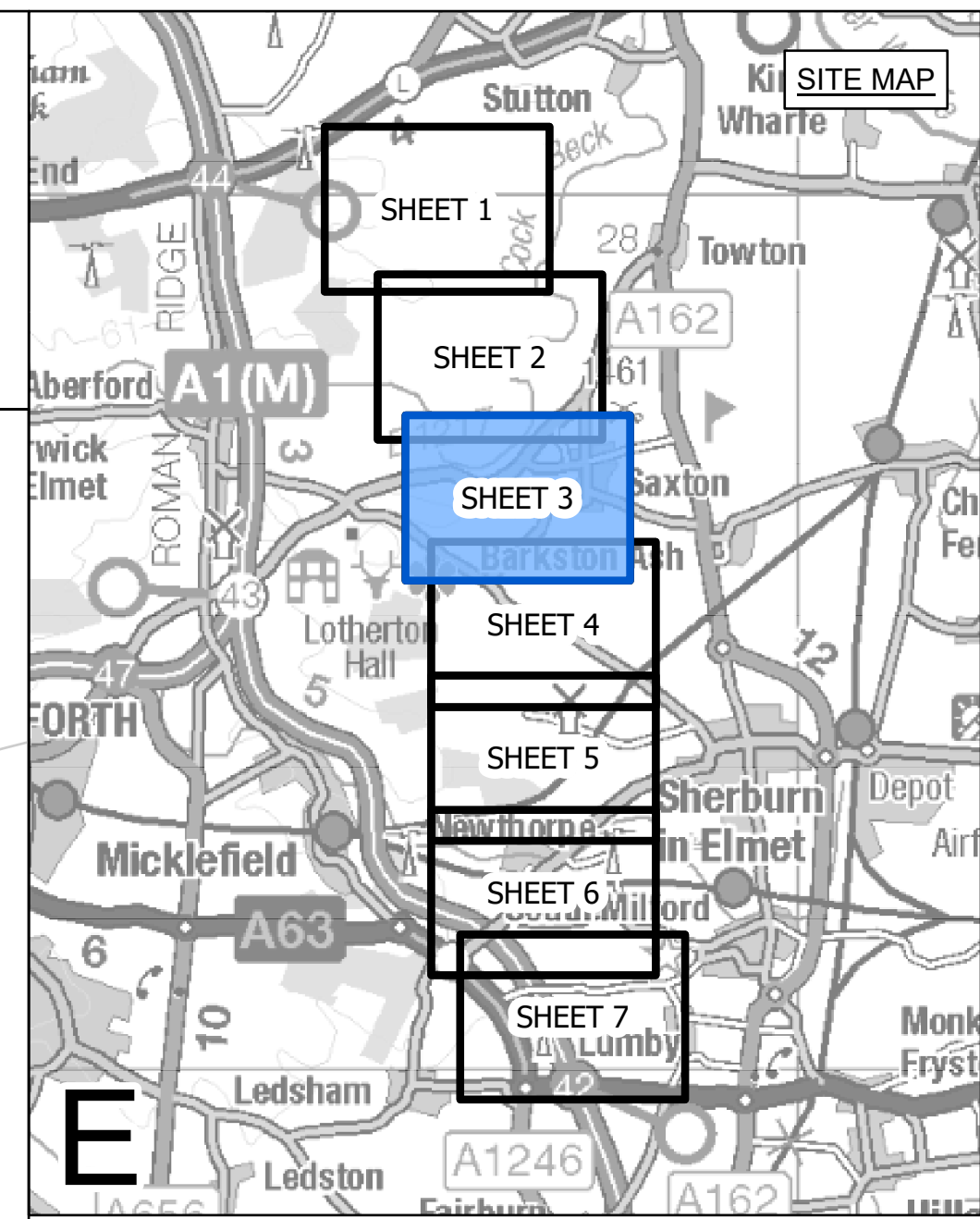
Issue	Date	Remarks	Drawn	Checked	Approved
B	14/02/2023	SS1 ADVICE UPDATE	MG	SF	EMD
A	01/11/2022	FOR DCO SUBMISSION	MG	SF	EMD

Title
 NATIONAL GRID (YORKSHIRE GREEN ENERGY ENABLEMENT PROJECT) ORDER
 LAND PLAN
 REGULATION 5(2)(i) - (ii)(iii)
 SECTION E, SHEET 2 OF 7

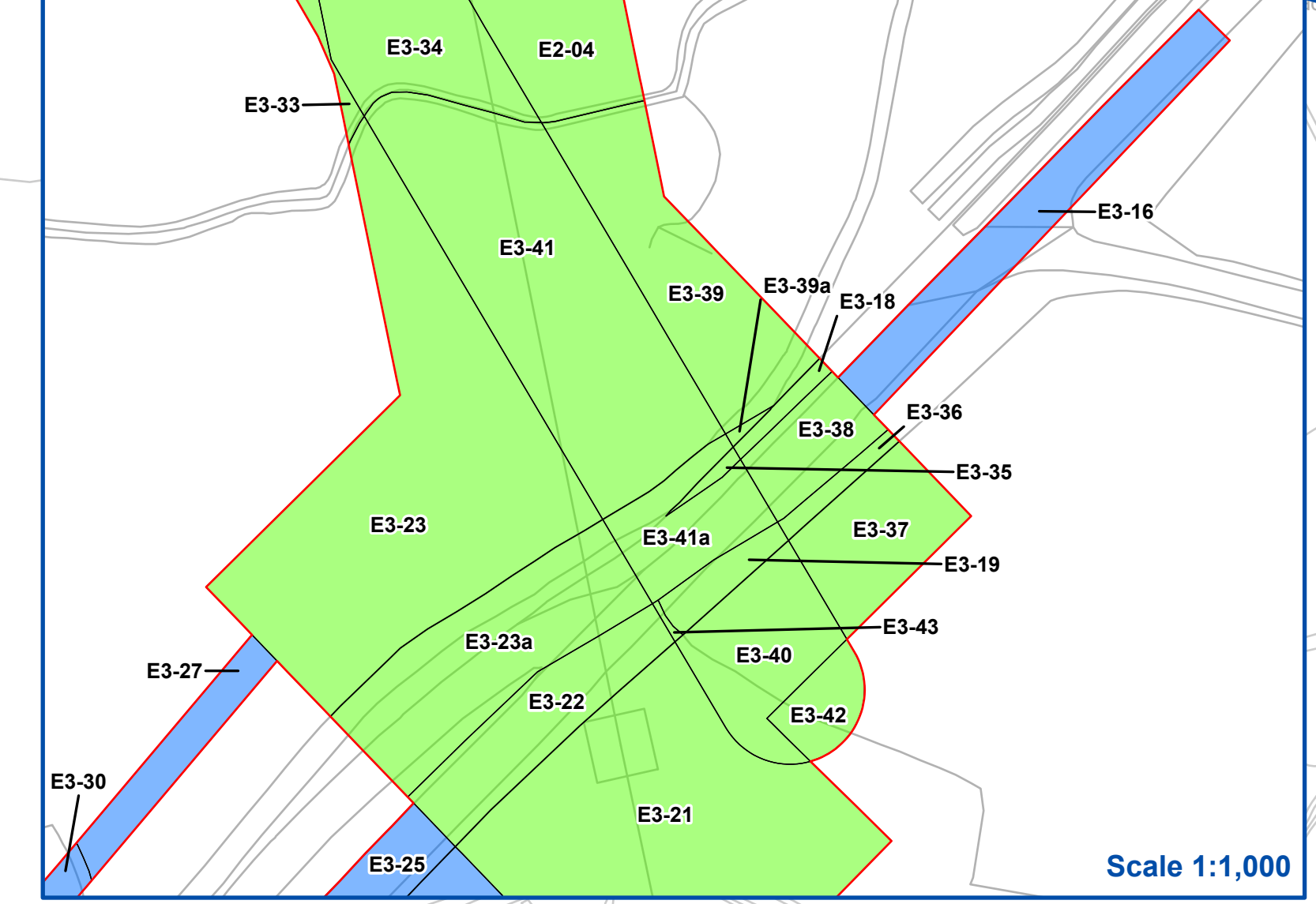
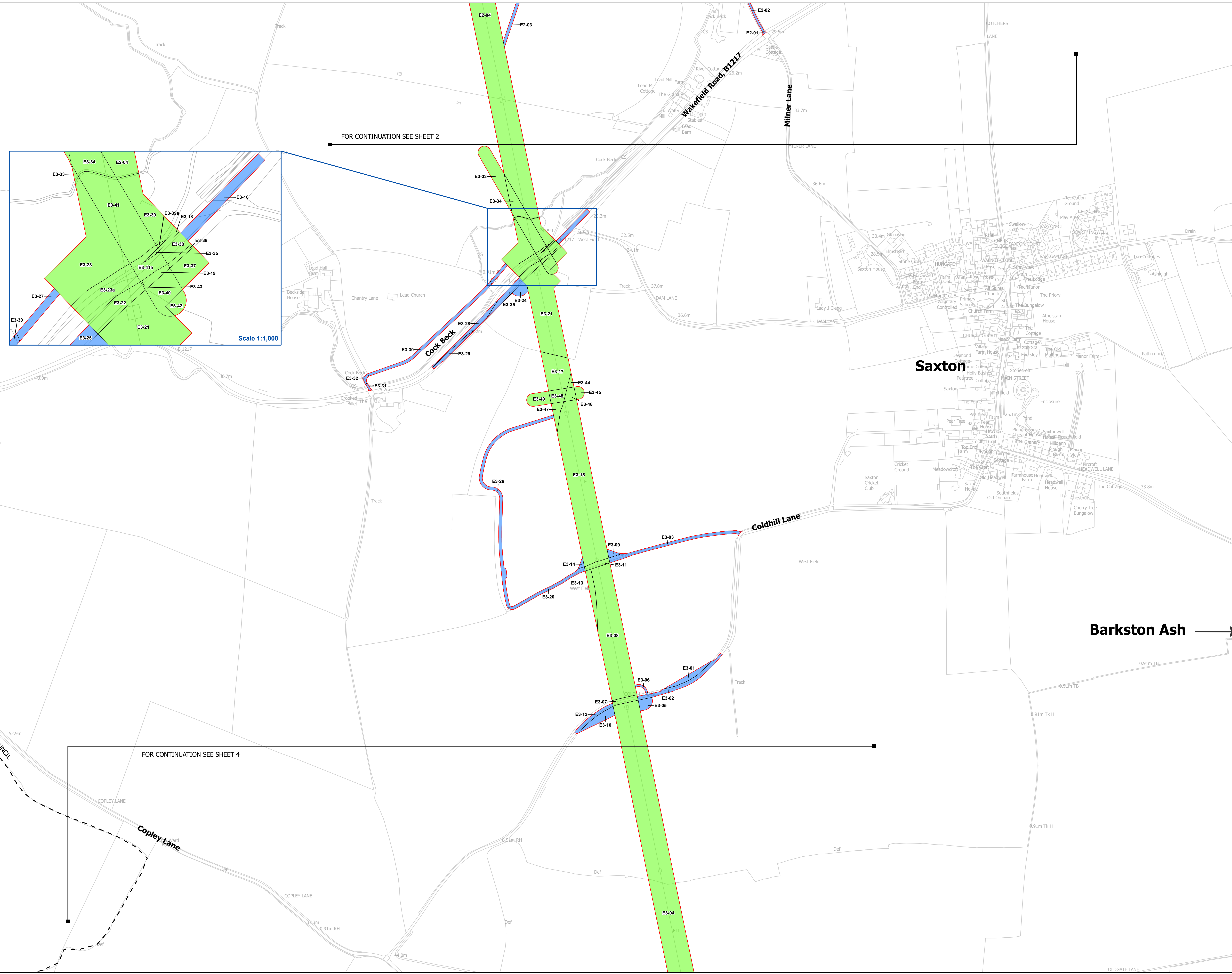
nationalgrid			
Application Number	EN020024		
National Grid Drawing Reference			
DCO_E/LP/PS/02			
Scale	Sheet Size	Sheet	Issue
1:2,500	A0	SHEET 2 OF 7	B



NATIONAL GRID (YORKSHIRE GREEN ENERGY ENABLEMENT PROJECT) ORDER
 LAND PLAN
 REGULATION 5(2)(i) - (ii)(iii)
 SECTION E, SHEET 3 OF 7



- LEGEND**
- - LOCAL AUTHORITY BOUNDARY
 - SECTION BOUNDARY
 - ▭ ORDER LIMITS
- PLOTS**
- CLASS 2 - COMPULSORY ACQUISITION OF RIGHTS FOR THE AUTHORISED DEVELOPMENT
 - CLASS 3 - COMPULSORY ACQUISITION OF RIGHTS OF ACCESS
 - CLASS 4 - TEMPORARY USE FOR CONSTRUCTION AND MITIGATION



Notes

This drawing is scaled at paper size A0, therefore any prints taken at smaller sizes will affect accuracy of the measurement units and should not be scaled against.

All easements, servitudes and private rights are proposed to be extinguished on land that is to be acquired unless stated otherwise in the Book of Reference (Volume 4, Document 4.3).

For additional detail on the plan suites, please refer to Document 2.3 Plan Guidance Document, located in Volume 2 of the DCO Application.

The local authorities' boundaries and titles are correct at the time of submission. North Yorkshire County Council and its 7 districts are expected to form a new single council (North Yorkshire Council) on 1 April 2023.

Coordinate System: British National Grid
 Sheet X Centroid Coordinate: 436527 Sheet Y Centroid Coordinate: 446784

BACKGROUND MAPPING INFORMATION HAS BEEN REPRODUCED FROM THE ORDNANCE SURVEY BY PERMISSION OF ORDNANCE SURVEY OF THE CONTROLLER OF HER MAJESTY'S STATIONERY OFFICE. CROWN COPYRIGHT ORDNANCE SURVEY ©. BLUESKY INTERNATIONAL LTD ©. NATIONAL GRID ELECTRICITY - 100024241.

Issue	Date	Remarks	Drawn	Checked	Approved
B	14/02/2023	SS1 ADVICE UPDATE	MG	SF	EMD
A	01/11/2022	FOR DCO SUBMISSION	MG	SF	EMD

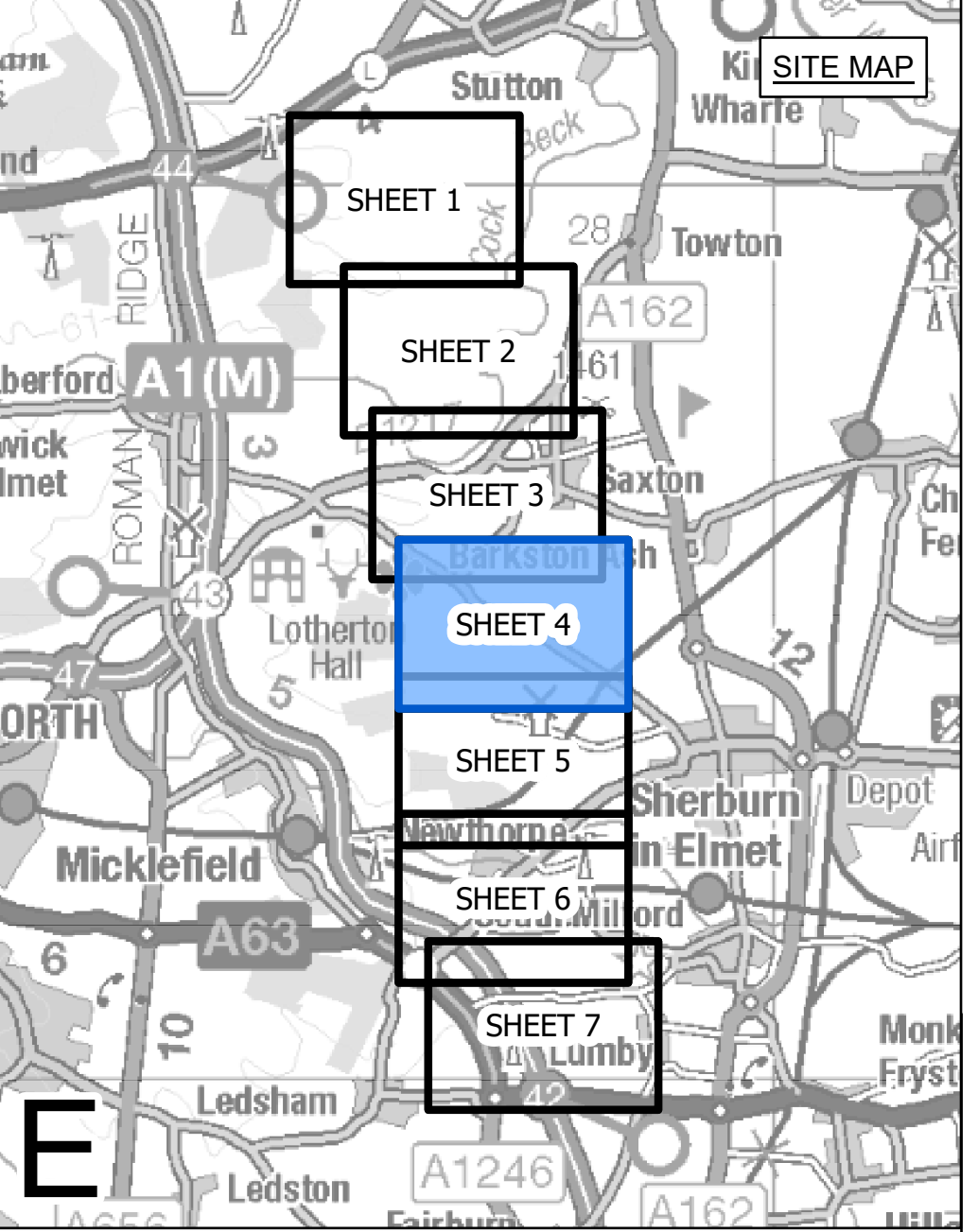
Title

NATIONAL GRID
 (YORKSHIRE GREEN ENERGY ENABLEMENT PROJECT) ORDER
 LAND PLAN
 REGULATION 5(2)(i) - (ii)(iii)
 SECTION E, SHEET 3 OF 7

Application Number		EN020024		
National Grid Drawing Reference		DCO_E/LP/PS/03		
Scale	Sheet Size	Sheet	Issue	
1:2,500	A0	SHEET 3 OF 7	B	



NATIONAL GRID (YORKSHIRE GREEN ENERGY ENABLEMENT PROJECT) ORDER
 LAND PLAN
 REGULATION 5(2)(i) - (ii)(iii)
 SECTION E, SHEET 4 OF 7



- LEGEND**
- LOCAL AUTHORITY BOUNDARY
 - SECTION BOUNDARY
 - ORDER LIMITS
- PLOTS**
- CLASS 2 - COMPULSORY ACQUISITION OF RIGHTS FOR THE AUTHORISED DEVELOPMENT
 - CLASS 3 - COMPULSORY ACQUISITION OF RIGHTS OF ACCESS
 - CLASS 4 - TEMPORARY USE FOR CONSTRUCTION AND MITIGATION

Notes

This drawing is scaled at paper size A0, therefore any prints taken at smaller sizes will affect accuracy of the measurement units and should not be scaled against.

All easements, servitudes and private rights are proposed to be extinguished on land that is to be acquired unless stated otherwise in the Book of Reference (Volume 4, Document 4.3).

For additional detail on the plan suites, please refer to Document 2.3 Plan Guidance Document, located in Volume 2 of the DCO Application.

The local authorities' boundaries and titles are correct at the time of submission. North Yorkshire County Council and its 7 districts are expected to form a new single council (North Yorkshire Council) on 1 April 2023.

Coordinate System: British National Grid
 Sheet X Centroid Coordinate: 435079 Sheet Y Centroid Coordinate: 447078

0 100 200 300 Meters

BACKGROUND MAPPING INFORMATION HAS BEEN REPRODUCED FROM THE ORDNANCE SURVEY BY PERMISSION OF ORDNANCE SURVEY OF THE CONTROLLER OF HER MAJESTY'S STATIONERY OFFICE. CROWN COPYRIGHT ORDNANCE SURVEY ©. BLUESKY INTERNATIONAL LTD ©. NATIONAL GRID ELECTRICITY - 100024241.

Issue	Date	Remarks	Drawn	Checked	Approved
B	14/02/2023	SS1 ADVICE UPDATE	MG	SF	EMD
A	01/11/2022	FOR DCO SUBMISSION	MG	SF	EMD

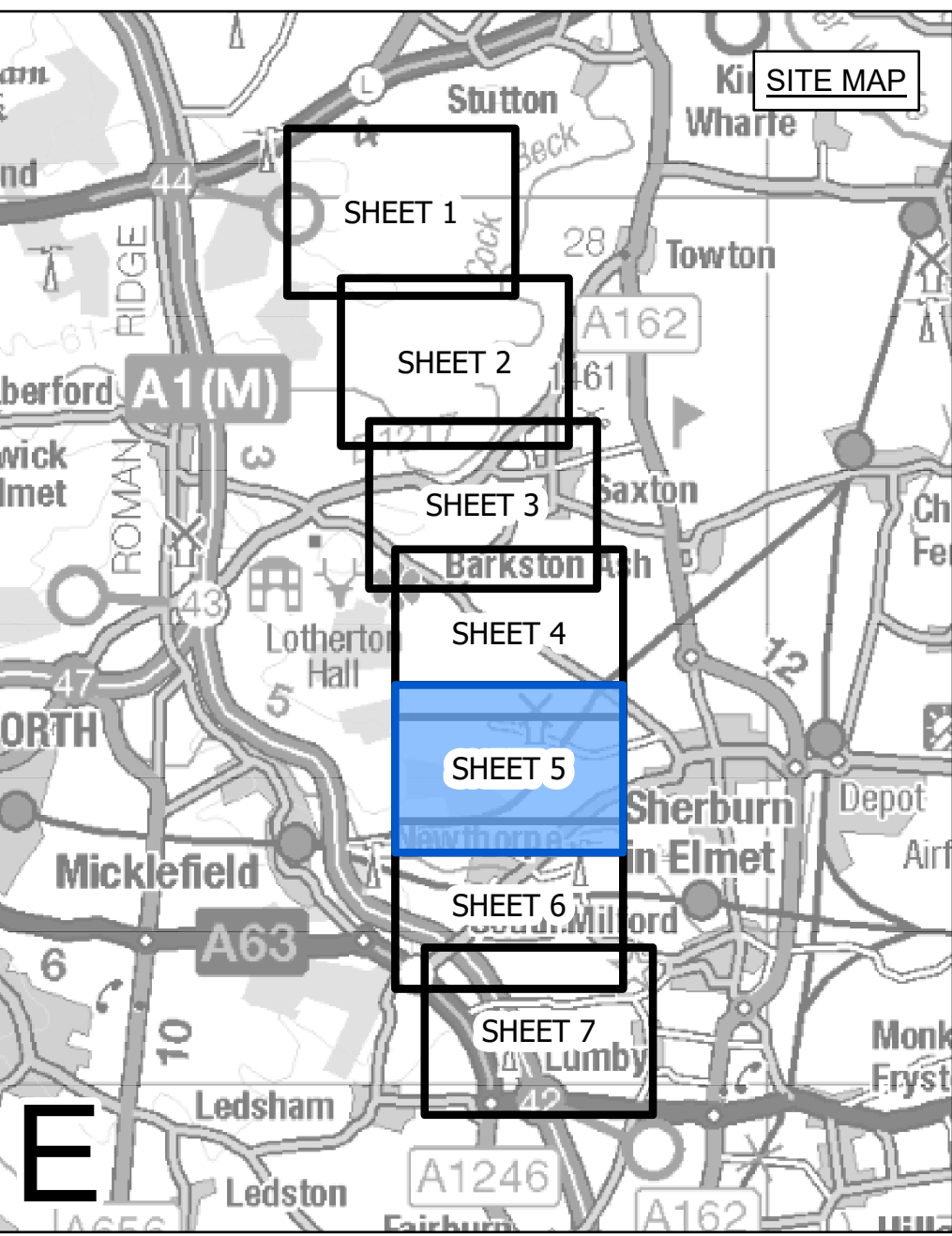
Title

NATIONAL GRID
 (YORKSHIRE GREEN ENERGY ENABLEMENT PROJECT) ORDER
 LAND PLAN
 REGULATION 5(2)(i) - (ii)(iii)
 SECTION E, SHEET 4 OF 7

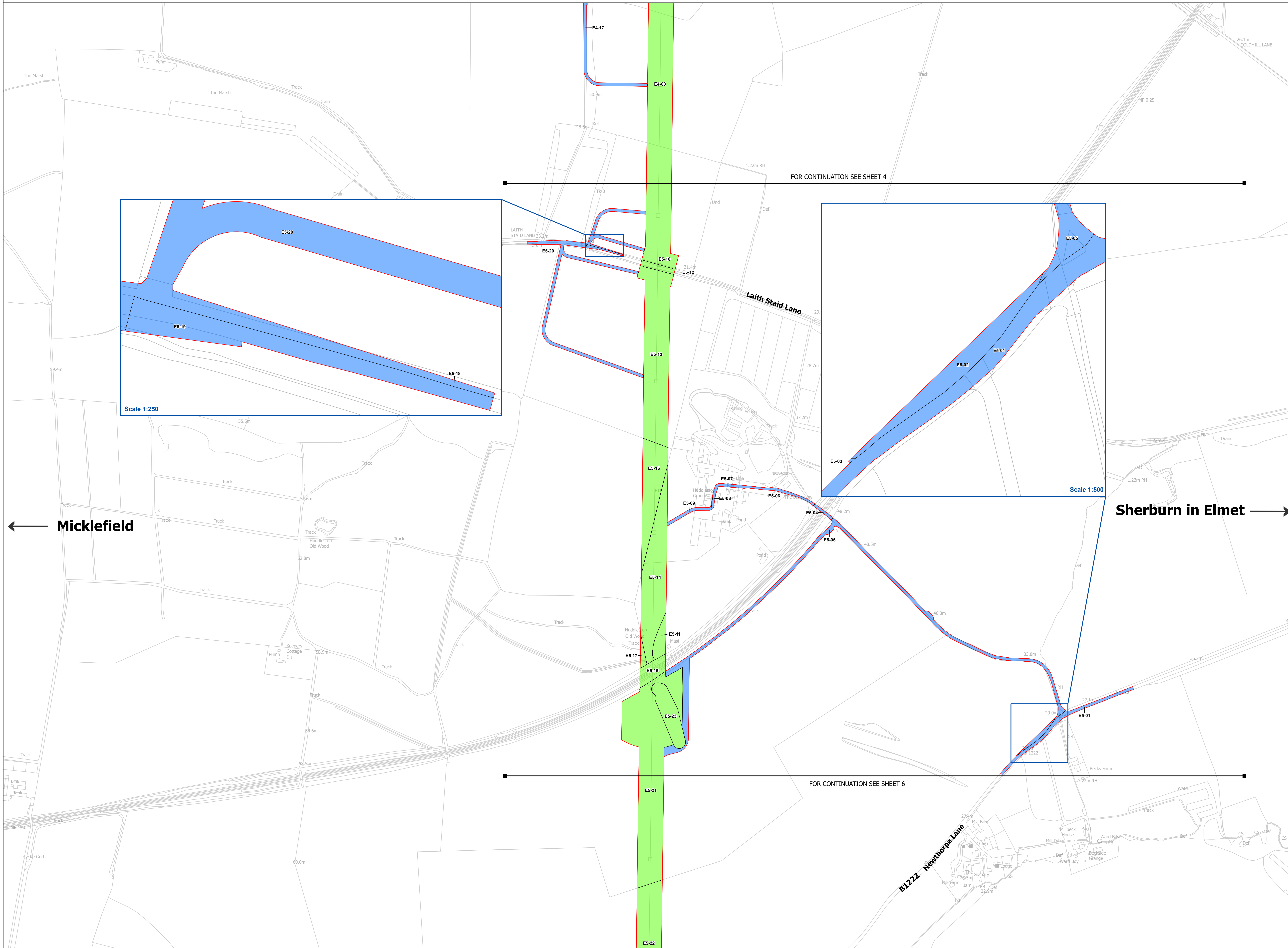
Application Number		EN020024		
National Grid Drawing Reference		DCO_E/LP/PS/04		
Scale	Sheet Size	Sheet	Issue	
1:2,500	A0	SHEET 4 OF 7	B	



NATIONAL GRID (YORKSHIRE GREEN ENERGY ENABLEMENT PROJECT) ORDER
 LAND PLAN
 REGULATION 5(2)(i) - (ii)(iii)
 SECTION E, SHEET 5 OF 7



- LEGEND**
- - LOCAL AUTHORITY BOUNDARY
 - SECTION BOUNDARY
 - ▭ ORDER LIMITS
- PLOTS**
- CLASS 2 - COMPULSORY ACQUISITION OF RIGHTS FOR THE AUTHORISED DEVELOPMENT
 - CLASS 3 - COMPULSORY ACQUISITION OF RIGHTS OF ACCESS
 - CLASS 4 - TEMPORARY USE FOR CONSTRUCTION AND MITIGATION



Notes
 This drawing is scaled at paper size A0, therefore any prints taken at smaller sizes will affect accuracy of the measurement units and should not be scaled against.

All easements, servitudes and private rights are proposed to be extinguished on land that is to be acquired unless stated otherwise in the Book of Reference (Volume 4, Document 4.3).

For additional detail on the plan suites, please refer to Document 2.3 Plan Guidance Document, located in Volume 2 of the DCO Application.

The local authorities' boundaries and titles are correct at the time of submission. North Yorkshire County Council and its 7 districts are expected to form a new single council (North Yorkshire Council) on 1 April 2023.

Coordinate System: British National Grid
 Sheet X Centroid Coordinate: 433551 Sheet Y Centroid Coordinate: 447078



BACKGROUND MAPPING INFORMATION HAS BEEN REPRODUCED FROM THE ORDNANCE SURVEY BY PERMISSION OF ORDNANCE SURVEY OF THE CONTROLLER OF HER MAJESTY'S STATIONERY OFFICE. CROWN COPYRIGHT ORDNANCE SURVEY ©. BLUESKY INTERNATIONAL LTD ©. NATIONAL GRID ELECTRICITY - 100024241.

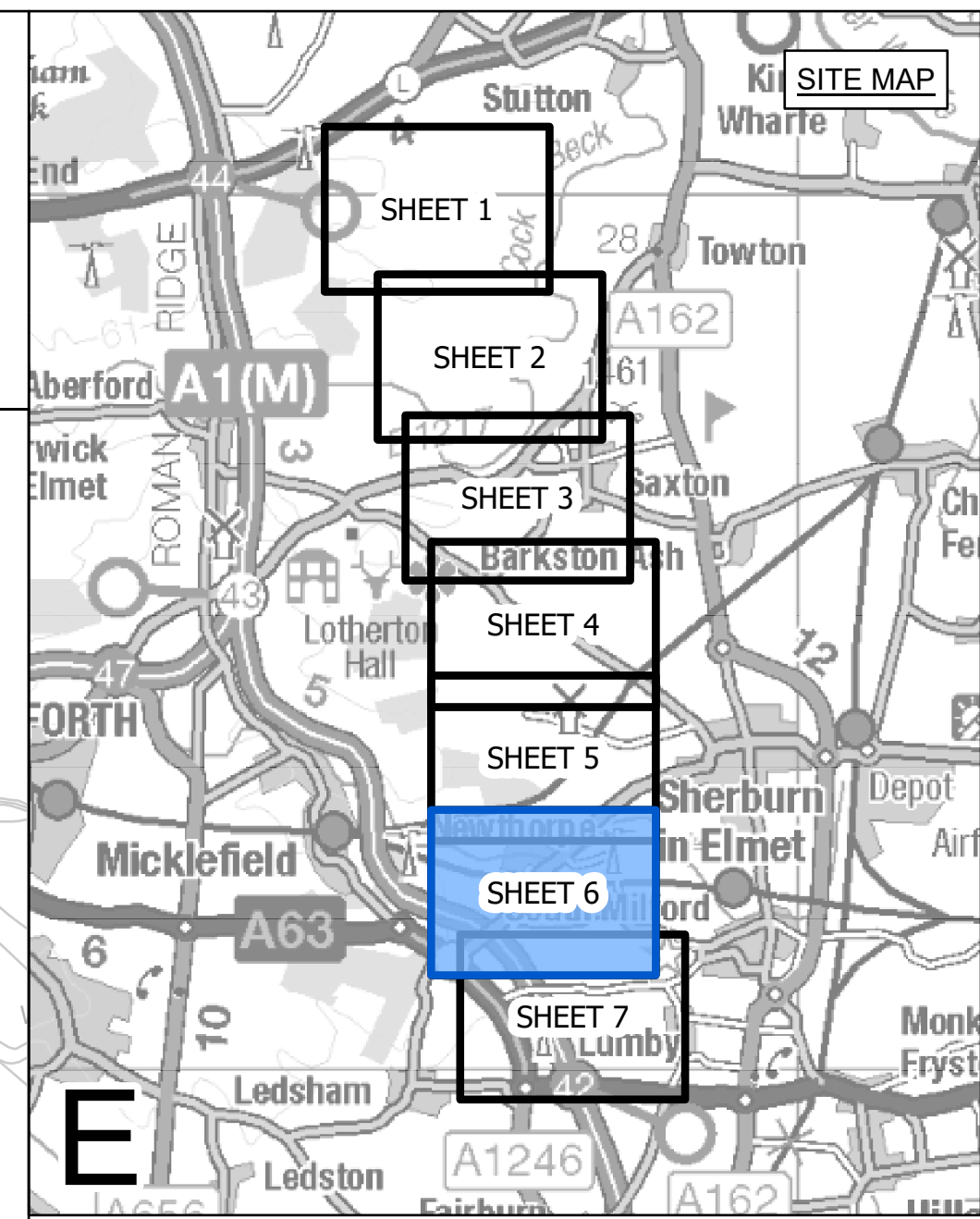
Issue	Date	Remarks	Drawn	Checked	Approved
B	14/02/2023	SS1 ADVICE UPDATE	MG	SF	EMD
A	01/11/2022	FOR DCO SUBMISSION	MG	SF	EMD

Title
 NATIONAL GRID
 (YORKSHIRE GREEN ENERGY
 ENABLEMENT PROJECT) ORDER
 LAND PLAN
 REGULATION 5(2)(i) - (ii)(iii)
 SECTION E, SHEET 5 OF 7

nationalgrid			
Application Number		EN020024	
National Grid Drawing Reference			
DCO_E/LP/PS/05			
Scale	Sheet Size	Sheet	Issue
1:2,500	A0	SHEET 5 OF 7	B



NATIONAL GRID (YORKSHIRE GREEN ENERGY ENABLEMENT PROJECT) ORDER
 LAND PLAN
 REGULATION 5(2)(i) - (ii)(iii)
 SECTION E, SHEET 6 OF 7



- LEGEND**
- - LOCAL AUTHORITY BOUNDARY
 - SECTION BOUNDARY
 - ORDER LIMITS
- PLOTS**
- CLASS 2 - COMPULSORY ACQUISITION OF RIGHTS FOR THE AUTHORISED DEVELOPMENT
 - CLASS 3 - COMPULSORY ACQUISITION OF RIGHTS OF ACCESS
 - CLASS 4 - TEMPORARY USE FOR CONSTRUCTION AND MITIGATION



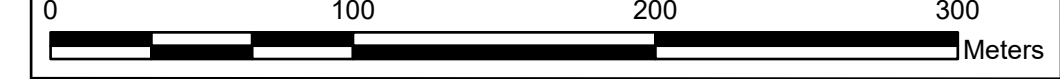
Notes
 This drawing is scaled at paper size A0, therefore any prints taken at smaller sizes will affect accuracy of the measurement units and should not be scaled against.

All easements, servitudes and private rights are proposed to be extinguished on land that is to be acquired unless stated otherwise in the Book of Reference (Volume 4, Document 4.3).

For additional detail on the plan suites, please refer to Document 2.3 Plan Guidance Document, located in Volume 2 of the DCO Application.

The local authorities' boundaries and titles are correct at the time of submission. North Yorkshire County Council and its 7 districts are expected to form a new single council (North Yorkshire Council) on 1 April 2023.

Coordinate System: British National Grid
 Sheet X Centroid Coordinate: 432013 Sheet Y Centroid Coordinate: 447078



BACKGROUND MAPPING INFORMATION HAS BEEN REPRODUCED FROM THE ORDNANCE SURVEY BY PERMISSION OF ORDNANCE SURVEY OF THE CONTROLLER OF HER MAJESTY'S STATIONERY OFFICE. CROWN COPYRIGHT ORDNANCE SURVEY ©. BLUESKY INTERNATIONAL LTD ©. NATIONAL GRID ELECTRICITY - 100024241.

Issue	Date	Remarks	Drawn	Checked	Approved
B	14/02/2023	SS1 ADVICE UPDATE	MG	SF	EMD
A	01/11/2022	FOR DCO SUBMISSION	MG	SF	EMD

Title
 NATIONAL GRID
 (YORKSHIRE GREEN ENERGY
 ENABLEMENT PROJECT) ORDER
 LAND PLAN
 REGULATION 5(2)(i) - (ii)(iii)
 SECTION E, SHEET 6 OF 7



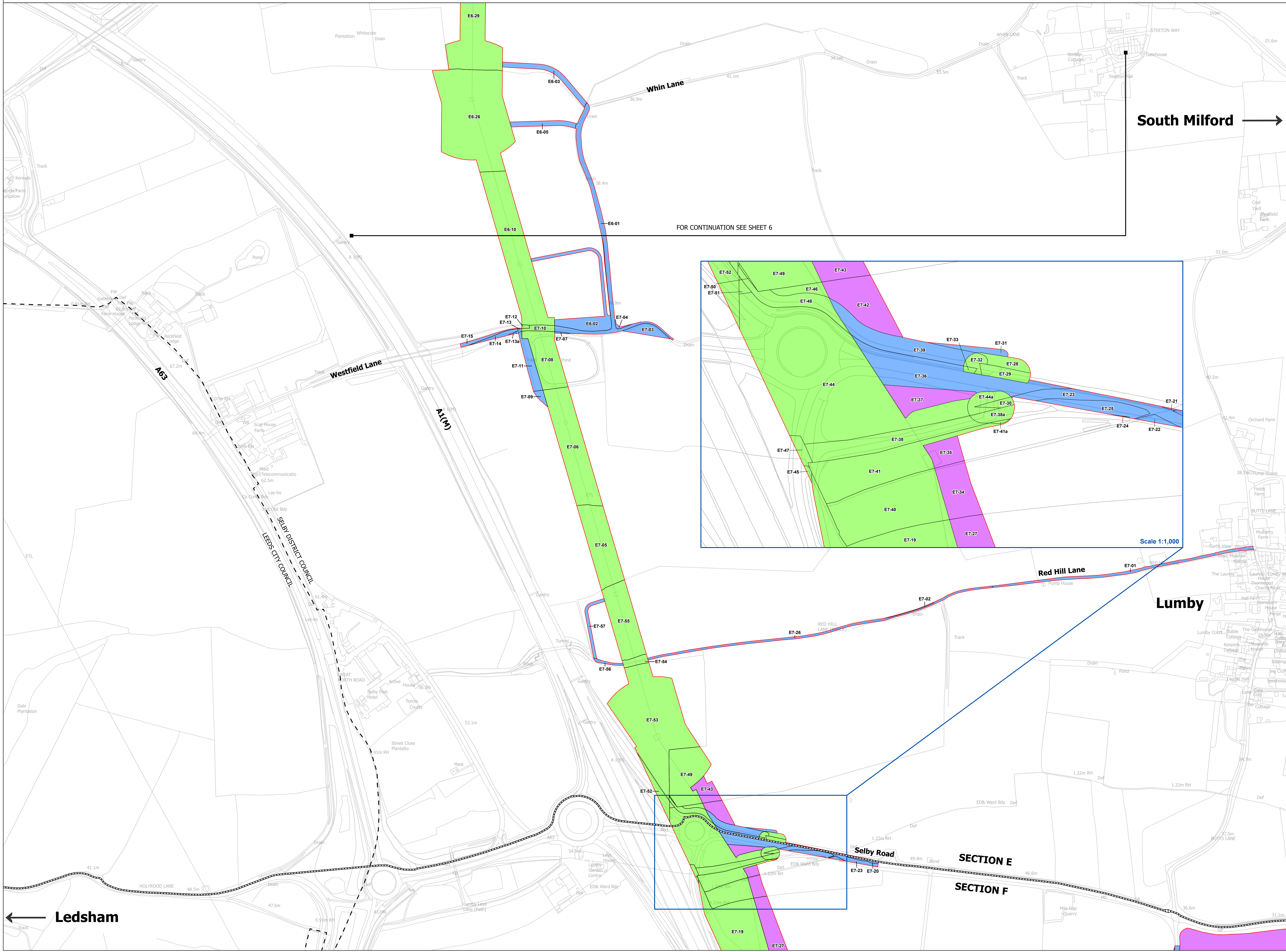
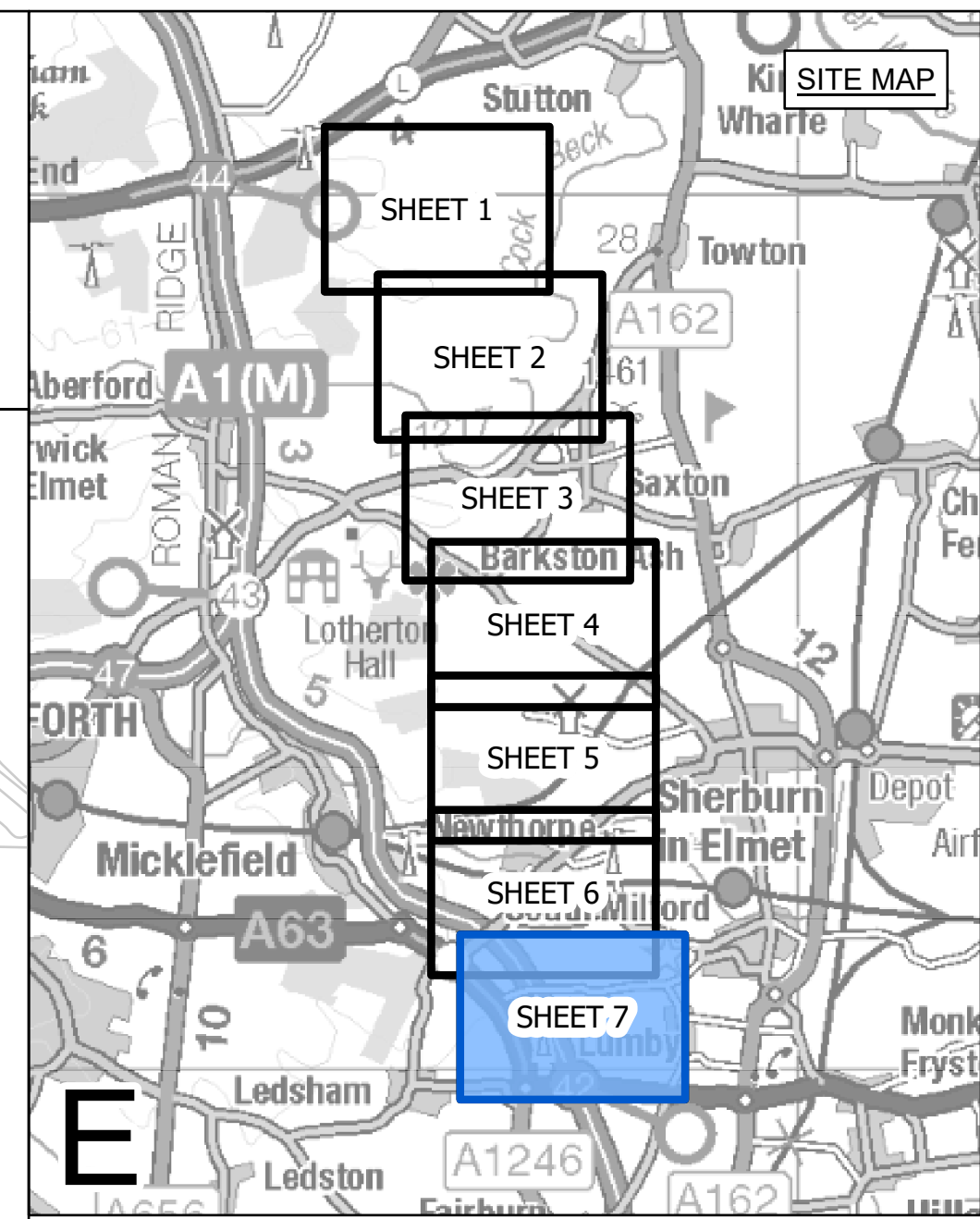
Application Number EN020024

National Grid Drawing Reference
 DCO_E/LP/PS/06

Scale	Sheet Size	Sheet	Issue
1:2,500	A0	SHEET 6 OF 7	B



NATIONAL GRID (YORKSHIRE GREEN ENERGY ENABLEMENT PROJECT) ORDER
 LAND PLAN
 REGULATION 5(2)(i) - (ii)(iii)
 SECTION E, SHEET 7 OF 7



- LEGEND**
- - LOCAL AUTHORITY BOUNDARY
 - SECTION BOUNDARY
 - ORDER LIMITS
- PLOTS**
- CLASS 2 - COMPULSORY ACQUISITION OF RIGHTS FOR THE AUTHORISED DEVELOPMENT
 - CLASS 3 - COMPULSORY ACQUISITION OF RIGHTS OF ACCESS
 - CLASS 4 - TEMPORARY USE FOR CONSTRUCTION AND MITIGATION

Notes
 This drawing is scaled at paper size A0, therefore any prints taken at smaller sizes will affect accuracy of the measurement units and should not be scaled against.

All easements, servitudes and private rights are proposed to be extinguished on land that is to be acquired unless stated otherwise in the Book of Reference (Volume 4, Document 4.3).

For additional detail on the plan suites, please refer to Document 2.3 Plan Guidance Document, located in Volume 2 of the DCO Application.

The local authorities' boundaries and titles are correct at the time of submission. North Yorkshire County Council and its 7 districts are expected to form a new single council (North Yorkshire Council) on 1 April 2023.

Coordinate System: British National Grid

Sheet X Centroid Coordinate: 430589 Sheet Y Centroid Coordinate: 447412

BACKGROUND MAPPING INFORMATION HAS BEEN REPRODUCED FROM THE ORDNANCE SURVEY BY PERMISSION OF ORDNANCE SURVEY OF THE CONTROLLER OF HER MAJESTY'S STATIONERY OFFICE. CROWN COPYRIGHT ORDNANCE SURVEY © BLUESKY INTERNATIONAL LTD © NATIONAL GRID ELECTRICITY - 100024241.

Issue	Date	Remarks	Drawn	Checked	Approved
B	14/02/2023	SS1 ADVICE UPDATE	MG	SF	EMD
A	01/11/2022	FOR DCO SUBMISSION	MG	SF	EMD

Title

NATIONAL GRID
 (YORKSHIRE GREEN ENERGY
 ENABLEMENT PROJECT) ORDER
 LAND PLAN
 REGULATION 5(2)(i) - (ii)(iii)
 SECTION E, SHEET 7 OF 7

nationalgrid

Application Number: EN020024

National Grid Drawing Reference: DCO_E/LP/PS/07

Scale	Sheet Size	Sheet	Issue
1:2,500	A0	SHEET 7 OF 7	B